

# Ashiya Newsletter

Volume 19  
October 1, 2010 No.2

Published by: Ashiya City Address: 7-6 Seido-cho, Ashiya-shi Phone: (0797)38-2008  
Home page: <http://www.city.ashiya.lg.jp/> E-mail address: [info@city.ashiya.hyogo.jp](mailto:info@city.ashiya.hyogo.jp)

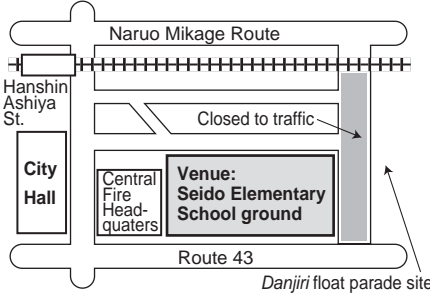
## The 22nd Ashiya Autumn Festival

**Inquiries: Ashiya Autumn Festival Committee Office Tel: 38-2033 (within City Hall Economic Affairs Section)**

Processions with *danjiri* floats, children's *mikoshi* (portable shrines), wind-instrument music, parade, outdoor stalls, souvenir shops, children's performances and much more.

**Date & Time: Oct. 10 (Sun.), 9:00 a.m.–3:00 p.m.**  
(light rain won't cancel it, but heavy rain will; you can check it at the website of Ashiya City, <http://www.city.ashiya.lg.jp/>)

**Venue:** Seido Elementary School ground and adjacent street on the east side.



\* The street east of Seido Elementary School will be closed to traffic during the time of the festival.

\* Car parking is not available; please come by other means of transport.



### Volunteers are welcome!

We are looking for volunteers to help the organizing committee.

**Type of work:** guiding, cleaning, supporting events

**Time:** 8:30 a.m. – 5:00 p.m. on the day of the festival

**Applications:** at the front office tent in the event site

## For children of foreign nationality wishing to enter a municipal elementary and/or junior high school in Ashiya.

**Inquiries: Ashiya City Board of Education Management Section (Tel. 38-2085)  
Place: Ashiya City Hall North Wing 4F**

- **People with children of foreign nationality wishing to enter a municipal elementary and/or junior high school in Ashiya (including from 1st year)**  
Please bring a seal, each child's Alien Registration Card, and file an application at the Board of Education Management Section.
- **Medical check-up prior to entering elementary school**  
The check-up for children planning to enter elementary school in the 2011 school year (born between April 2, 2004 and April 1, 2005) follows the schedule.  
\* Please apply in advance at the Board of Education Management Section, for a checkup on an assigned day and at an assigned school.

Elementary Schools	
* Reception desk opens at 1:30 p.m.	
Iwazono	Oct. 28 (Thu.)
Yamate	Oct. 28 (Thu.)
Asahigaoka	Nov. 2 (Tue.)
Hamakaze	Nov. 8 (Mon.)
Shiomi	Nov. 9 (Tue.)
Seido	Nov. 11 (Thu.)
Uchidehama	Nov. 11 (Thu.)
Miyagawa	Nov. 18 (Thu.)

## Opening in Spring 2011 Start of Construction of a Cultural Exchange Facility in Minami-ashiyahama

Inquiries: International Exchange Subsection, Tel. 38-2008

The Cultural Exchange Facility is a triple-function 2-story ferroconcrete building comprising a local community exchange center, an international exchange center and a health promotion facility. Completion is due for mid-March 2011.

- **Local Community Exchange Center**  
It will be the core venue for local community exchange, with 3 western-style rooms and 1 Japanese-style room on the 1st floor, in the style of an assembly hall.
- **International Exchange Center**  
It will be the core venue for international exchange activities, including a large meeting room with capacity for 150 people, 2 small meeting rooms and a cooking room.
- **Health Promotion Facility**  
It will promote exchange among citizens through sports, and include a multi-purpose square for outdoor sports.



Image of the Cultural Exchange Facility

## "70"-shaped Flowers

in the North Square of Ashiya City Hall  
Ashiya City will be celebrating its 70th anniversary of municipality this coming November. At the end of last May, as part of the commemoration, citizens and city officials collaborated to plant flowers in the shape of number 70 in a flowerbed in the north square of City Hall.



Melampodium

## Smoking is not allowed in the No-smoking Zone

Contact: Environment Section,  
Tel. 38-2050

In order to avoid getting burned by walking smokers in crowded places, inhaling tobacco smoke and the smell of tobacco, after deliberating the matter with neighborhood community associations and concerned parties, the area around JR Ashiya Station was designated as a No-smoking Zone. Therefore, smoking while walking and smoking outside designated smoking areas is prohibited. Please make sure to smoke only in the Designated Smoking Area.



There is a 2,000 yen civil fine for smoking in the No-smoking Zone.  
\* The number of designated smoking areas was reduced from 6 to 1 as of June 2010. Of the former 6 designated areas in the No-smoking Zone, only the one in the pedestrian deck on the 2nd floor north of JR Ashiya Station remains as of June 1, 2010. Also, smoking while walking or riding a bicycle is prohibited in all public areas in Ashiya, such as streets, parks, plazas, etc. We ask smokers to carry their own portable ashtrays at all times and follow manners for smoking so as not to cause inconvenience to other people.



## Garbage Collection Schedule by Area (Oct. & Nov.)

Inquiries: Refuse Disposal Center (Collection Subsection)  
Tel: 22-2155 Fax: 32-6247

(Burnable Garbage)

Type	Time	Day	Area	Oct.	Nov.
Burnable kitchen waste, paper scraps, disposable diapers, leather goods, plastics	By 8:30 a.m.	Mon. & Thu.	Chayano, Funado, Hama-ashiya, Higashi-ashiya, Higashiyama, Hirata, Hirata-kita, Ise, Kawanishi, Kimmitsu, Kurekawa, Maeda, Matsuhama, Matsunouchi, Miyagawa, Miyazuka, Nishi-ashiya, Nishiyama, Ohara, Okuike, Okuike-minami, Okuyama, Omasu, Sanjo, Sanjo-minami, Shimizu, Seido, Takezono, Tsukiwaka, Tsuji, Yamate, Yama-ashiya	4, 7, 11, 14, 18, 21, 25, 28	1, 4, 8, 11, 15, 18, 22, 25, 29
		Tue. & Fri.	Asahigaoka, Daito, Hama, Iwazono, Kasuga, Kami-miyagawa, Kusunoki, Midorigaoka, 10 to 19 Minami-hama, Narihira, Nangu, Nishikura, Rokurokuso, Shinnozuka, Suzukaze, 10 to 20 Takahama, Uchide, Uchide-kozuchi, Wakamiya, 8-20 Yoko	1, 5, 8, 12, 15, 19, 22, 26, 29	2, 5, 9, 12, 16, 19, 23, 26, 30

(Paper recyclables, PET bottles)

Type	Time	Day	Area	Garbage Collection - Oct. & Nov.				
				Cardboard (1st & 5th week Wed.)	Magazines, fliers, various papers (2nd week Wed.) Paper cookie boxes	Newspapers, cartons (4th week Wed.)	PET bottles	
Paper recyclables, PET bottles	By 8:30 a.m.	Wed.	Throughout the city	Oct.	27	6	20	13
				Nov.	3	10	24	17

(There is no designated garbage bag for domestic burnable garbage in Ashiya, so you can use any kind of bag. However, make sure that no side - height, width and depth - exceeds 50 cm. Anything over the 50 cm limit falls in the bulky (large-size) garbage category and is collected at a charge. Also, make sure to put non-burnable garbage in a bag when disposing. Bags for non-burnable garbage must not exceed 30 cm in height, width and depth. Anything over the 30 cm limit falls in the bulky (large-size) garbage category and is collected at a charge.)

(Non-burnable)

Type	Time	Day	Area	Garbage Collection Schedule			
				Cans	Bottles	Other	
Cans, aluminum (3rd week)		Mon.	Kasuga, Midorigaoka, Miyagawa, Nishiyama, Seido, Uchide, Uchide-kozuchi, Wakamiya, Yama-ashiya	Oct.	11	25	4, 18
				Nov.	15	1, 29	8, 22
Bottles (1st & 5th week)		Tue.	Hirata, Hirata-kita, Kawanishi, Maeda, Nishi-ashiya, Okuyama, Sanjo, Sanjo-minami, Shimizu, Tsuji, Tsukiwaka, Yamate	Oct.	12	26	5, 19
				Nov.	16	2, 30	9, 23
Other non-burnable garbage (2nd & 4th week)		Wed.	Daito, Funado, Hama, Higashi-ashiya, Higashiyama, Matsunouchi, Nangu, Nishikura, Okuike, Okuike-minami	Oct.	13	27	6, 20
				Nov.	17	3	10, 24
		Thu.	Asahigaoka, Chayano, Kami-miyagawa, Kimmitsu, Kusunoki, Miyazuka, Narihira, Omasu	Oct.	14	28	7, 21
				Nov.	18	4	11, 25
		Fri.	Hama-ashiya, Iwazono, Ise, Kurekawa, Matsuhama, Ohara, Rokurokuso, Shinnozuka, Takezono	Oct.	15	1, 29	8, 22
				Nov.	19	5	12, 26

## Garbage Collection in Ashiyahama & Minami-ashiyahama District - Tel. 32-5391

Burnable garbage is collected by the pipeline system. The following items can be inserted at the slots: kitchen garbage, plants, plastics, paper, cloth, leather and rubber items, etc. Make sure disposed items are in suitable shapes and go smoothly through the slots, so as not to cause problems once they are inside.

Area	Type (Time)	Cans (by 0:30 p.m.)		Bottles (by 0:30 p.m.)		Other non-burnable garbage (by 0:30 p.m.)		PET bottles (by 8:30 a.m.)	
		Oct.	Nov.	Oct.	Nov.	Oct.	Nov.	Oct.	Nov.
1 to 9 Takahama		4, 11, 18, 25	1, 8, 15, 22, 29	Bottle receptacles		4, 18	8, 22	14, 21, 28	4, 18, 25
10 to 20 Takahama		11	15	25	1, 29			13	17
Wakaba		5, 12, 19, 26	2, 9, 16, 23, 30	Bottle receptacles		5, 19	9, 23	14, 21, 28	4, 18, 25
Yoko 1 to 7, Kaiyo 1 to 7		13	17	27	3	6, 20	10, 24		
Shiomi, Midori, Minami-hama, Suzukaze		14	18	28	4	7, 21	11, 25	13	17
Niihama, Hamakaze		15	19	1, 29	5	8, 22	12, 26		

- One burnable garbage that are too big to fit in the pipeline slots are collected on Thursday of the 2nd week of the month. Please take it out by 8:30 a.m.
- Tree branches and wood scraps should be cut into pieces no more than 50 cm long and with a diameter of 10 cm or less. Take them out in bundles at garbage collection points.
- Large amounts of videotapes can stall the pipeline. Please take them out on Other Burnable Garbage days.

### Municipal Taxes Due in October

Individual City & Prefecture Tax (3rd period)  
**Contact:** Tax Section Resident Tax Subsection Tel. 38-2016  
 Municipal Corporate Tax & Business Facility Tax (for those closing August 31)  
**Contact:** Tax Section Management Subsection Tel. 38-2015  
**Deadline for filing and payment:** November 1 (Mon.)

### Notification from the Tax Section



### Municipal Taxes Due in November

Municipal Corporate Tax & Business Facility Tax (for those closing September 30)  
**Contact:** Tax Section Management Subsection Tel. 38-2015  
**Deadline for filing and payment:** November 30 (Tue.)

### Sunday Consultation for Municipal Taxpayers

**Inquiries: Tax Collection Section, Tel. 38-2014**  
 Consultation is available for municipal taxpayers every last Sunday of the month.  
 It is also possible to pay municipal taxes then.  
 Go to the Tax Collection Section counter after going through procedures at the security office on the first basement level of the North Wing.  
**Dates & hours: October 31, November 28 (9:00 a.m.-5:00 p.m.)**

# Opening of Ashiya City Public Health and Welfare Center

Contact: Welfare Center Subsection  
14-9 Kurekawa-cho, Tel. 0797-31-0612



The new Ashiya City Public Health and Welfare Center comprises three departments: (1) Welfare Center, (2) Health Center and (3) Dental Center.

Ashiya City Public Health and Welfare Center has 8 different functions.

## 1. Consultation

The Center provides concrete support on matters related with welfare, health and nursing to anyone and whenever needed.

## 2. Source of information

The Center gathers and provides a broad range of welfare-related information, while also undertaking new projects and engaging in educational activities for citizens.

## 3. Health and rehabilitation

The Center is a venue for promoting health and fitness, and giving proper training to children with disabilities.

## 4. Base for support activities

The Center is a base for welfare organizations, volunteers and other group activities.

## 5. Culture and exchange

The Center promotes a variety of interactions among citizens as well as exchange activities for the understanding of welfare for people with disabilities or dementia.

## 6. Child rearing support

The Center provides consultation for parents and children, and facilitates exchange and sharing of information while also supporting school-age children.

## 7. Employment support

The Center introduces workplaces suitable for people with disabilities.

## 8. Nursing service

The Center provides comprehensive nursing service and care management for the elderly.

### ③ Health Center

The new Health Center promotes the health of citizens - from babies to the elderly - and through a staff of doctors, health nurses, and nutritionists give lifelong support to mind and body health of the local community. It has barrier free features and offers enhanced medical checkups, vaccination and consultation services.



### ② Child Care Support Center (Child Planet Ashiya)

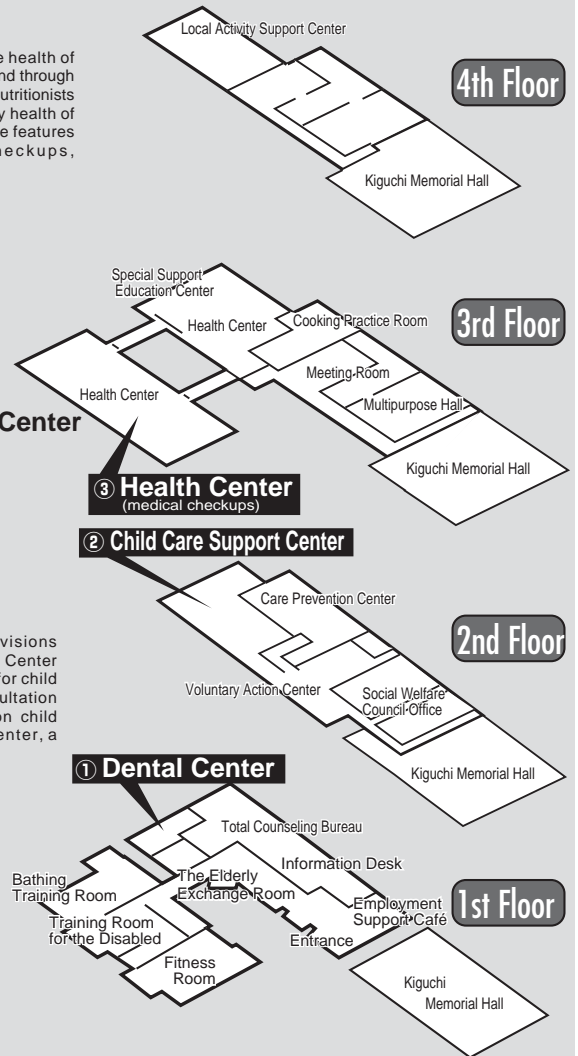


It comprises three closely linked divisions supporting child care: the Child Care Center that promotes various undertakings for child rearing; the Family & Children Consultation Room that provides consultation on child rearing; and the Family Support Center, a day-care center for up to 6th graders.

### ① Dental Center



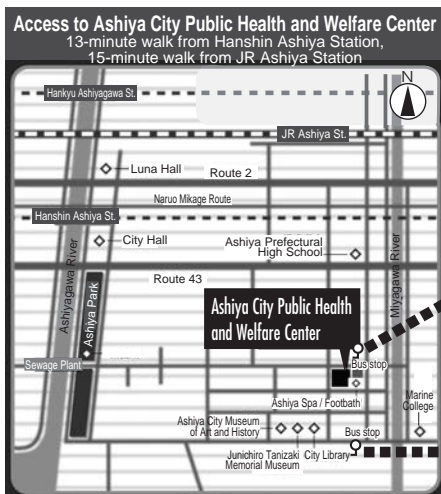
Open for emergency on holidays. Dental care is provided in cases of sudden tooth pain or injury on holidays. Free dental checkup and consultation are also available. Checkup for periodontal diseases is offered to people aged 40 years or over. There is also health guidance on proper brushing of teeth and prevention of periodontal diseases.



## Floor Guide

### Open days & Office hours

	Contact - Division	Open days	Office hours	Telephone
1st Floor	Dental Center	Open for emergency on holidays: Sun., holidays, year-end and New Year's season	9:00-11:30 a.m.	31-0658
	Free dental checkup and consultation	1st & 3rd Wed. of the month	1:00-2:45 p.m.	
2nd Floor	Family & Children Consultation Room	Mon. to Fri.	9:00 a.m.-5:30 p.m.	31-0643
	Family Support Center			25-0521
	Child Rearing Center			31-8006
3rd Floor	Health Center	Mon. to Fri.	9:00 a.m.-5:30 p.m.	31-1586 (Fax: 31-1018)



**Hankyu Bus Line: get off at Kurekawa-cho Stop (1-minute walk southward)**  
 1. From JR Ashiya-minamiguchi Stop: take bus number 10, 50 or 59 (bound for Daito-cho via Niihama-cho)  
 2. From JR Ashiya-minamiguchi Stop: take bus number 24 or 27 (bound for Ashiyahama Eigyocho via Wakaba-cho)  
 3. From JR Ashiya Stop: take bus number 20 (bound for Ashiya-minamiguchi via Wakaba-cho)

**Hankyu Bus Line: get off at Chuo Koenmae Stop (2-minute walk northward)**  
 1. From JR Ashiya Stop and Hanshin Ashiya Stop: take bus number 31, 32, 36, or 131 (bound for Niihama-cho/Ashiyahama Eigyocho).  
 2. From Hankyu Ashiyagawa Stop: take bus numbers 31 or 131 (bound for Niihama-cho/Ashiyahama Eigyocho).



Adjacent Ashiya Spa & Footbath

# EVENTS

## Junichiro Tanizaki Memorial Museum Program

Tel.: 23-5852 Fax: 38-3244

### (Lobby Gallery)

[Masahiko Shioyama Photo Exhibit]

*Yuruyuruto* (Leisurely) *Inshu Washi* Japanese Hand-molded Paper Photos

● From Sep. 29 (Wed.) to November 14 (Sun.)

▶ Theme: Photo Exhibit of artwork done on *Inshu Washi*, by photographer Masahiko Shioyama

### (Lobby Gallery)

[Japanese Calligraphy Exhibit featuring work by Suzaku Fujita and others]

180th Anniversary of Ryokan's Death

"*Hachisu no Tsuyu* (Dew on the Lotus) Poems"

● From Nov. 17 (Wed.) to Dec. 26 (Sun.)

▶ Theme: Brush writing of Ryokan and Teishinni love letters

\*The museum will be closed on Mondays in October and November (however, it will be open on Mondays which are public holidays, and will close on the subsequent Tuesdays)

\*Temporary closing for change of display:

Nov. 29 (Mon.) to Dec. 2 (Thu.)

## Events at Ashiya City Museum of Art and History

Tel. 38-5432

■ Admission fee: Adults 300 yen, university and high school students 200 yen, free for junior high school students or under (for all ongoing exhibits)

● From Sep. 18 (Sat.) to Dec. 5 (Sun.) 2010

### (1st Exhibition Room)

#### ▶ Takuzo Tennojiya Exhibit

Oil painter Takuzo Tennojiya (1919-1990) was born and based in Ashiya, where he spent all his life. He was instrumental in establishing the Art Institute of Osaka Municipal Museum of Art and endeavored in nurturing future artists. This is the first retrospective exhibition of his life and works. He devoted himself to sketching and traveled extensively to get material for his landscape drawings, which are part of the exhibition.

### (2nd Exhibition Room)

▶ "*Ashiya Modernism and Life Style*", by Ashiya City 70th Anniversary of Municipality Project

In November Ashiya City will commemorate the 70th Anniversary of Municipality. The exhibition depicts Ashiya's cultural attributes from the perspective of the growing active role of women in society. Archive materials will show the unique face of Ashiya sophistication and life style.

#### ▶ Autumn Art Flea Market

● October 16 (Sat.) and 17 (Sun.)

(to be cancelled if it rains)

Admission free

● Time: 10:00 a.m.-5:00 p.m.

● Place: Sculpture space in the front garden of the Museum

Talk and buy original crafts directly from art creators at about 50 outdoor stalls. There is also a hands-on corner for firsthand creative work.



## The 3rd Ashiya Citizens' Festa

Inquiries: Ashiya Citizens' Festa Organizing Committee Office Tel. 26-6452

▶ "Ashiya City 70th Anniversary of Municipality Project" - The 3rd Ashiya Citizens' Festa

▶ "We love Ashiya - Let's be together and spread the word"

● Dates and time: November 13 (Sat.) & 14 (Sun.), from 9:30 a.m.

● Venue: *Hanamizuki* Ashiya (Ashiya City Public Health and Welfare Center, Kiguchi Memorial Hall and adjacent area); 14-9 Kurekawa-cho, Ashiya

Introduction to citizens' activities groups in Ashiya, seminars, workshops, bazaar and other enjoyable events.

## Kami-miyagawa One-coin Theater

Tel. 22-9229

● Place: Kami-miyagawa Cultural Center 2F, Large Hall, Capacity 150 people

■ Admission fee: 500 yen (for junior high school students and above)

\*1st showing: 10:30 a.m.; 2nd showing 2:00 p.m.

▶ Random Harvest (*Kokoro no Tabiji*)

● Date: November 27 (Sat.)

● Starring: Ronald Colman, Greer Garson, Philip Dorn

## Friday Cinema Salon

Tel: 31-2301

● Starting Time: 1:30 p.m.

(Doors open at 1:15 p.m.)

● Place: Ashiya Municipal Library,

2F Meeting Room

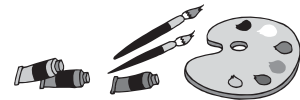
● October 15 : *Sanma no Aji* (An Autumn Afternoon)

1962, Japan, 1 hour 53 minutes

Director: Yasujiro Ozu

Starring: Chishu Ryu, Shima Iwashita

An elderly widower who lives with his daughter worries about her marriage. A colleague introduces a prospective person, talks go slowly but eventually the marriage is arranged. The daughter marries, and ...



## Main Events at Municipal Schools (October and November)

Ashiya City Board of Education School Education Section Tel. 38-2087

October	November
<b>1. Camping School</b> (Elementary School) Oct. 4 (Mon.) to 8 (Fri.) Yamate Oct. 11 (Mon.) to 15 (Fri.) Shiomi Oct. 26 (Tue.) to 30 (Sat.) Uchidehama	<b>1. All Junior High School Cultural Festival</b> Nov. 1 (Mon.) at Luna Hall (music category) Nov. 20 (Sat.) to 22 (Mon.), mornings, at Citizens' Center (exhibition)
<b>2. School Trip</b> (Elementary School) Oct. 21 (Thu.) to 22 (Fri.) Yamate	<b>2. Camping School</b> (Elementary School) Nov. 8 (Mon.) to 12 (Fri.) Miyagawa
<b>3. Sports Festival</b> (Elementary School) Oct. 16 (Sat.) Seido, Iwazono	<b>3. Kindergarten Week</b> (All Kindergartens) Nov. 8 (Mon.) to 12 (Fri.)
<b>4. Chorus Contest</b> (Junior High School) Oct. 22 (Fri.) Yamate Oct. 28 (Thu.) Seido Oct. 29 (Fri.) Shiomi	<b>4. Open High School</b> Nov. 9 (Tue.) & 10 (Wed.)
<b>5. Nakayoshi (Friendly) Festival</b> Oct. 29 (Fri.) Kindergartens	<b>5. Music Festival</b> (Elementary School) Nov. 20 (Sat.) Asahigaoka, Iwazono, Miyagawa, Seido, Shiomi Uchidehama, Yamate Nov. 21 (Sun.) Hamakaze

## "The Four Seasons of Ashiya - 70 Selected Photos" Winning Entries - Photo Exhibit

Citizens submitted their photos as part of the commemoration of the 70th Anniversary of Municipality of Ashiya City. 78 items were selected for the present exhibition.

● Dates: October 27 (Wed.) to November 10 (Wed.)

● Place: Citizens' Center Exhibition Hall



**ACA**

Events by Ashiya Cosmopolitan Association

**GROUP DE CARPE DIEM**

La Mall Ashiya 2F, 2-6-209 Ohara-cho  
 Tel. 34-6340 Fax: 34-6341

**Theme:** Novels of the Brontë sisters

**Date & Time:** October 25 (Mon.) 15:00-16:30, "Emily Brontë 'Wuthering Heights' "  
 November 29 (Mon.) 15:00-16:30, "Anne Brontë 'Agnes Grey' "

**Lecturer:** Mr. Akira Tamai

(Professor Emeritus of Osaka University/Professor of Mukogawa Women's University)

**Venue:** ACA Large meeting room

**Fee:** Member 500 yen, Non Member 700 yen per time

**Capacity:** 40 people \*Please make a reservation