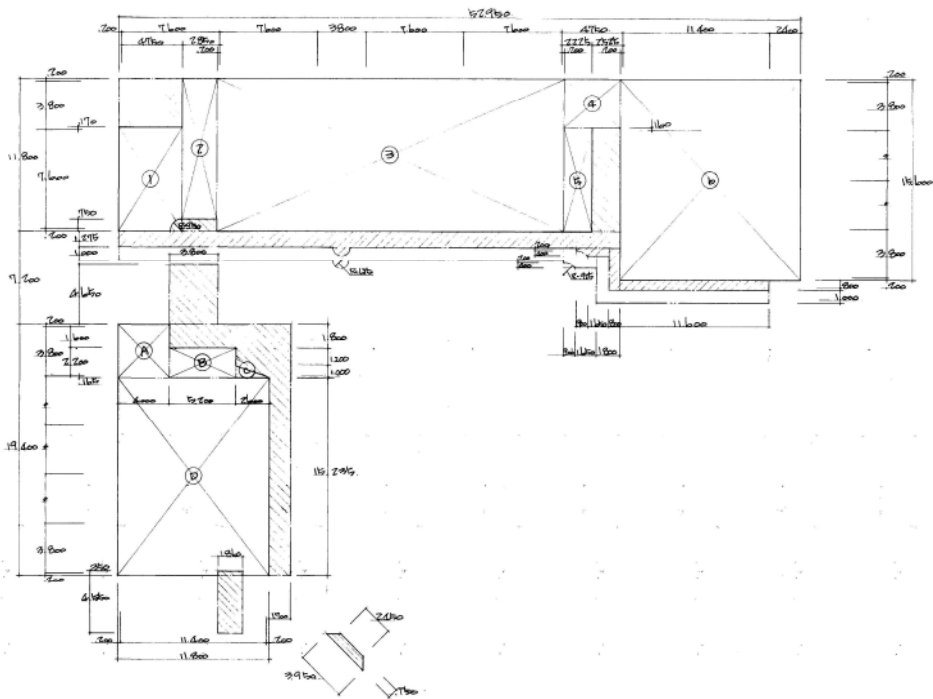


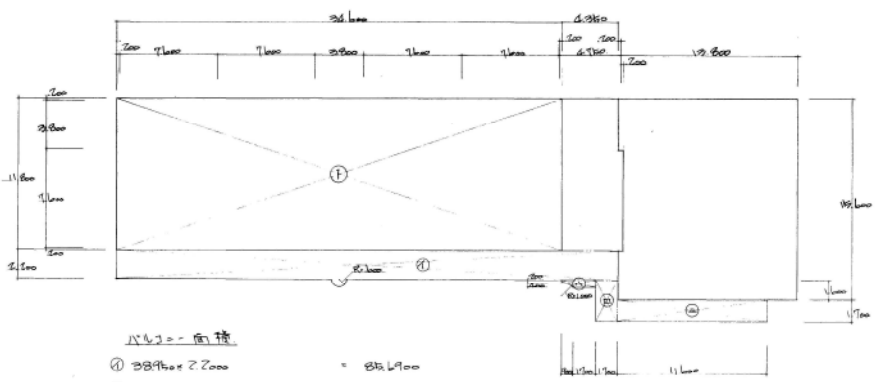
# 竣工図面



## 住宅金融公庫 床面積

保育棟		管理棟	
1	① $4.95 \times 7.97 = 95.27 \times 3/4 = 38.7430$	A $4.00 \times 4.165 = 16.6600$	
	② $2.65 \times 10.85 = 28.7525$	B $4.2 \times 2.365 = 12.2980$	
	③ $2.7 \times 11.8 = 31.8600$	C $2.6 \times 1.665 \times 1/2 = 2.0345$	
	④ $4.25 \times 3.84 = 16.7040$	D $11.8 \times 1.23 \times 1.8 \times 1.25 = 17.91220$	
	⑤ $2.025 \times 7.96 = 16.1190$		
F	⑥ $14.00 \times 15.6 = 218.4000$		
	小計 637.3185	小計 210.145	
2	① $34.6 \times 11.8 = 408.2800$		
F			
	小計 1045.5985		
計	1045.5985		

合計 1256 m<sup>2</sup>



1/42 = 面積

①	$38.95 \times 2.2 = 85.6900$
②	$1.7 \times 3.3 = 5.6100$
③	$2.6 \times 1.6 - 9.0 \times 3.14 \times 1/8 = 1.2878$
	$+ 9.0 \times 4.0 \times 1/2 = 1.2878$
④	$11.6 \times 1.7 = 19.7200$
計	112.3078

## 建築基準法運用係

建築面積	建築面積
1F $38.95 \times 11.8 = 459.6100$	1F $38.95 \times 11.8 + 1.7 \times 3.14 \times 1/2 = 50.3765$
$14.00 \times 15.6 = 218.4000$	$8.0 \times 3.325 = 2.6600$
$3.8 \times 4.65 = 17.6700$	$2.55 \times 1.6 - 9.25 \times 3.14 \times 1/8 = 1.2323$
$13.5 \times 14.4 = 261.9000$	$+ 9.0 \times 4.0 \times 1/2 = 1.2873$
$1.8 \times 4.65 = 8.4300$	$11.6 \times 8.0 = 9.2800$
$1.7 \times (3.95 + 2.45) \times 1/2 = 2.4000$	
小計 968.4430	計 1031.9918
2F $38.95 \times 11.8 + 4.0 \times 7.8 = 462.7300$	
小計 1431.1730	

## 敷地面積

$77.2 \times 38.3 = 2957.9600$
$77.2 \times 38.3 = 2957.9690$
計 5915.8180
1/2 2957.9090

